

## Chemical analysis report

<b>Customer</b>	Hilma Biocare
<b>Sample:</b>	
<b>- accepted</b>	January 19, 2018
<b>- completed</b>	January 23, 2018
<b>- name</b>	T-0982
<b>- batch</b>	N/A
<b>- appearance</b>	Colorless oil
<b>- amount</b>	1 vial

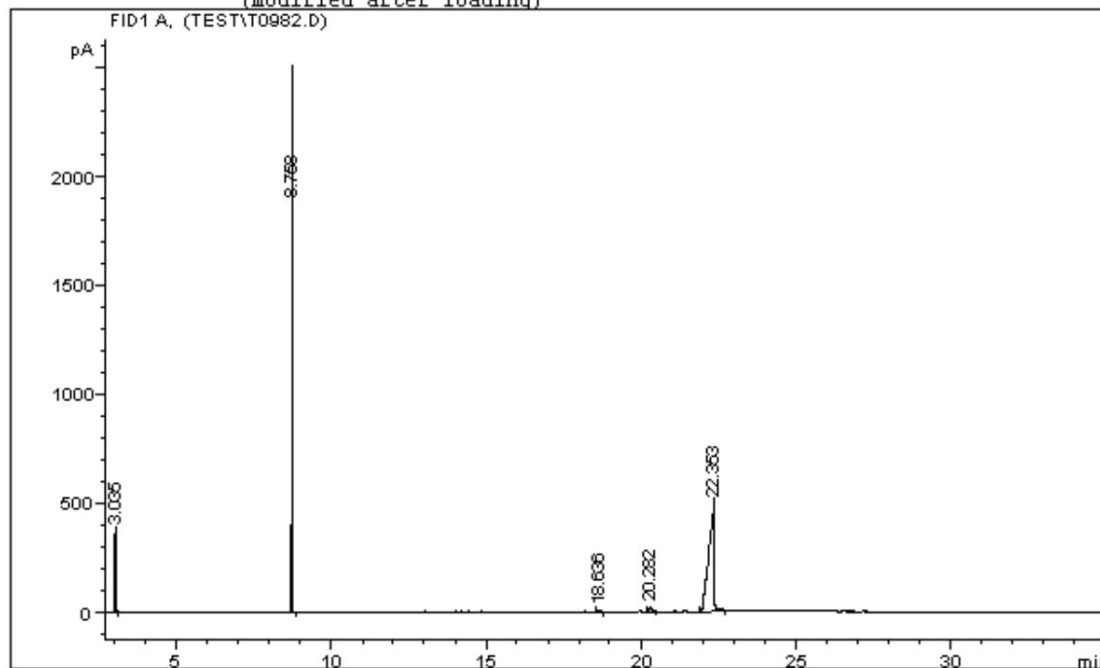
<b>Analysis:</b>	<b>Method</b>	<b>Result</b>
<b>Identification</b>	GC/FID	<u>Testosterone Enanthate</u> (Benzyl Alcohol; Benzyl Benzoate)
<b>Content</b>	RP-HPLC/DAD	TE: 243 mg/mL

# GC/FID Analysis:

Data File C:\HPCHEM\1\DATA\TEST\T0982.D

Sample Name: T0982 oil

=====  
Injection Date : 21.1.2018 18:17:59 odp.  
Sample Name : T0982 oil Location : Vial 5  
Acq. Operator : Inj : 1  
Acq. Instrument : Instrument 1 Inj Volume : 1 µl  
Acq. Method : C:\HPCHEM\1\METHODS\TEST.M  
Last changed : 21.1.2018 18:19:09 odp.  
(modified after loading)  
Analysis Method : C:\HPCHEM\1\METHODS\TEST.M  
Last changed : 22.1.2018 15:39:17 odp.  
(modified after loading)



## Area Percent Report

Sorted By : Signal  
Multiplier : 1.0000  
Dilution : 1.0000  
Use Multiplier & Dilution Factor with ISTDs

Signal 1: FID1 A,

Peak #	RetTime [min]	Type	Width [min]	Area [pA*s]	Height [pA]	Area %
1	1.660	BB S	0.0593	3.95920e5	8.99669e4	96.76825
2	3.035	PB	0.0416	951.12555	374.39319	0.23247
3	8.758	BB	0.0489	5502.91748	1876.58423	1.34499
4	18.636	BP	0.0701	37.40845	8.06400	0.00914
5	20.282	PB	0.0954	121.04688	19.78436	0.02959
6	22.353	PB	0.1892	6609.96826	490.46539	1.61557

Totals : 4.09142e5 9.27361e4

Results obtained with enhanced integrator!

\*\*\* End of Report \*\*\*

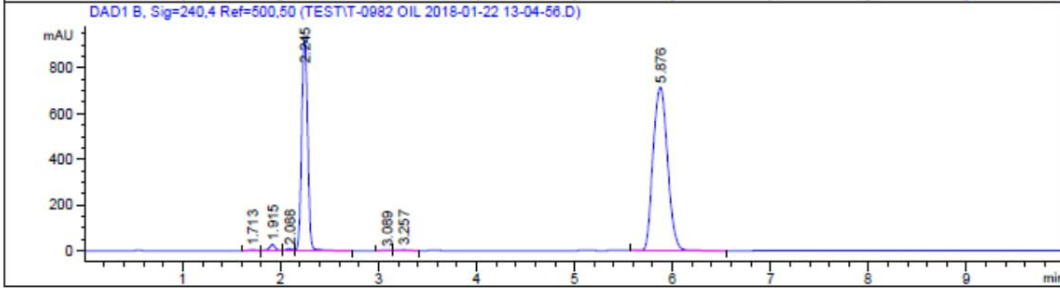
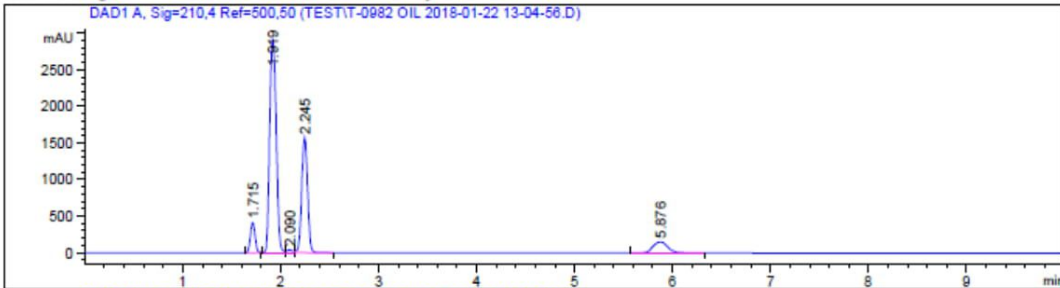
# RP-HPLC/DAD Analysis:

Data File C:\CHEM32\1\DATA\TEST\T-0982 OIL 2018-01-22 13-04-56.D  
 Sample Name: T-0982 oil

```

=====
Acq. Operator   : SYSTEM
Sample Operator : SYSTEM
Acq. Instrument : 1260                      Location : P1-D-05
Injection Date  : 1/22/2018 1:05:33 PM
                                           Inj Volume : 1.000 µl

Acq. Method    : C:\CHEM32\1\METHODS\TEST.M
Last changed   : 1/21/2018 11:56:34 PM by SYSTEM
                (modified after loading)
Analysis Method : C:\CHEM32\1\METHODS\TEST.M
Last changed   : 1/16/2018 11:50:03 PM by SYSTEM
  
```



## Area Percent Report

```

=====
Sorted By      : Signal
Multiplier    : 1.0000
Dilution      : 1.0000
Do not use Multiplier & Dilution Factor with ISTDs
  
```

Signal 1: DAD1 A, Sig=210,4 Ref=500,50

Peak #	RetTime [min]	Type	Width [min]	Area [mAU*s]	Height [mAU]	Area %
1	1.715	BB	0.0524	1348.28564	409.92706	5.8350
2	1.919	BV	0.0764	1.35200e4	2898.76709	58.5105
3	2.090	VV	0.0751	170.35477	32.54111	0.7372
4	2.245	VB	0.0667	6539.45557	1566.29211	28.3008
5	5.876	BB	0.1651	1528.87207	149.74846	6.6165

Totals : 2.31070e4 5057.27583

Signal 2: DAD1 B, Sig=240,4 Ref=500,50

Peak #	RetTime [min]	Type	Width [min]	Area [mAU*s]	Height [MAU]	Area %
1	1.713	BV	0.0589	14.85248	3.85565	0.1297
2	1.915	VV	0.0650	109.88653	26.15087	0.9593
3	2.088	VV	0.0653	36.06475	8.53235	0.3149
4	2.245	VB	0.0672	3933.18091	931.76160	34.3378
5	3.089	BV	0.0898	6.36394	1.09508	0.0556
6	3.257	VB	0.1152	18.58337	2.43154	0.1622
7	5.876	BB	0.1653	7335.43018	717.33856	64.0405

Totals : 1.14544e4 1691.16564

=====  
\*\*\* End of Report \*\*\*